

**Malte Giesen**

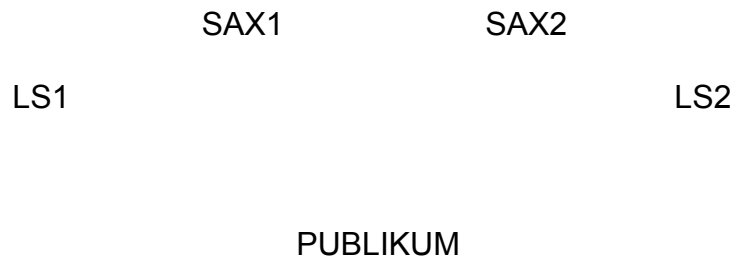
**Mit Verlaub (gehoben, eine  
möglicherweise Ärger erregende  
Aussage einleitend)**

**Für zwei Altsaxophone und Elektronik**

**(2013)**

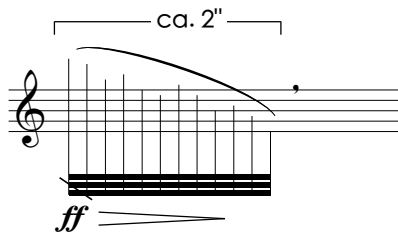
## Besetzung/Setup:

- zwei Altsaxophone
- zweikanalige Eletronik (Laptop, 2 Mikrophone, 2 Lautsprecher)

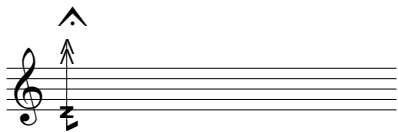


Das Patch und Audiodateien für die Aufführung sind beim Komponisten/Verlag erhältlich.

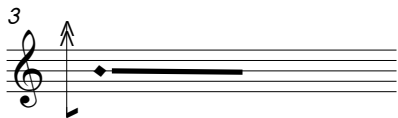
# Erläuterungen



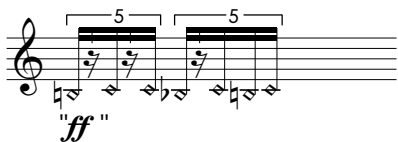
sehr schnell, skalenähnliche Läufe in angegebener Lage;  
mindestens chromatisch, gerne auch kleiner.



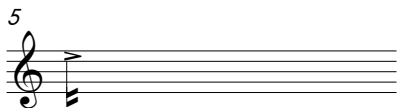
Zahnton, sehr hoch und quietschend



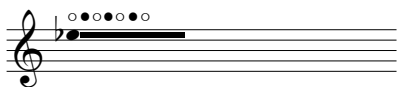
so hoch wie möglich, aber ohne Zähne;  
rautenförmiger Ton wird gesungen



sehr geräuschhafte Töne, eher Luft mit leichter Färbung.



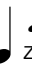
Slap



Alternativ-Griffe / Vibratones

# mit Verlaub

(gehoben, eine möglicherweise Ärger errende Aussage einleitend)

5.  ca. 140, exakt zusammen, notfalls langsamer  
Zirkularatmung bis T. 12 wenn möglich, sonst schummeln

Malte Giesen  
vorl. Fassung 11.01.13

Altsaxophon 1 *f*

Altsaxophon 2 *f*

Elektronik GM-Piano *f*



Asax. 1 3 4

Asax. 2 3 4

El.



Asax. 1 5 6

Asax. 2 5 6

El.



7 8

Asax. 1

Asax. 2

El.

9 10

Asax. 1

Asax. 2

El.

div. GM-Sounds

11 12

Asax. 1

Asax. 2

El.

*mf*

*mf*

div. GM-Sounds

14 15

Asax. 1

Asax. 2

El.

This block contains the first system of a musical score, covering measures 14 and 15. It features three staves: Asax. 1 (top), Asax. 2 (middle), and El. (bottom). Each staff has a treble clef and a key signature of one flat. Above the Asax. 1 and Asax. 2 staves are two empty staves with a wavy line indicating dynamics. The Asax. 1 staff contains a melodic line with eighth and sixteenth notes. The Asax. 2 staff contains a similar melodic line. The El. staff contains a complex accompaniment with many beamed notes.

16 17

Asax. 1

Asax. 2

El.

This block contains the second system of a musical score, covering measures 16 and 17. It features three staves: Asax. 1 (top), Asax. 2 (middle), and El. (bottom). Each staff has a treble clef and a key signature of one flat. Above the Asax. 1 and Asax. 2 staves are two empty staves with a wavy line indicating dynamics. The Asax. 1 staff contains a melodic line with eighth and sixteenth notes. The Asax. 2 staff contains a similar melodic line. The El. staff contains a complex accompaniment with many beamed notes.

18 19

Asax. 1

Asax. 2

El.

Detailed description: This block contains the first system of a musical score, covering measures 18 and 19. It features three staves: Asax. 1 (top), Asax. 2 (middle), and El. (bottom). Each staff has a treble clef. Above the Asax. 1 and Asax. 2 staves are two empty staves with a wavy line indicating dynamics. The music consists of eighth and sixteenth notes with various accidentals (sharps, flats, naturals). Measure 18 starts with a key signature of one sharp (F#). Measure 19 continues the melodic and harmonic development.

20 21

Asax. 1

Asax. 2

El.

*pp*

Detailed description: This block contains the second system of the musical score, covering measures 20 and 21. It features the same three staves as the first system. Above the Asax. 1 and Asax. 2 staves are two empty staves with a wavy line indicating dynamics. The music continues with eighth and sixteenth notes. Measure 20 ends with a key signature change to one flat (Bb). Measure 21 concludes with a *pp* (pianissimo) dynamic marking. The El. staff also ends with a *pp* marking.

Asax. 1

22

23

Asax. 2

22

23

El.

This system covers measures 22 and 23. The first staff (Asax. 1) features a melodic line with a triplet of eighth notes in measure 22 and a triplet of eighth notes in measure 23, both marked with a '3' and a bracket. The second staff (Asax. 2) contains a complex rhythmic accompaniment with many beamed notes. The third staff (El.) provides a bass line with a triplet of eighth notes in measure 22 and a triplet of eighth notes in measure 23, also marked with a '3' and a bracket. A dynamic hairpin is present between the first and second staves.

Asax. 1

24

25

Asax. 2

24

25

El.

This system covers measures 24 and 25. The first staff (Asax. 1) has a melodic line with a triplet of eighth notes in measure 25, marked with a '3' and a bracket. The second staff (Asax. 2) continues the rhythmic accompaniment. The third staff (El.) has a bass line with a triplet of eighth notes in measure 25, marked with a '3' and a bracket. A dynamic hairpin is present between the first and second staves.

Asax. 1

26

27

Asax. 2

26

27

El.

This system covers measures 26 and 27. The first staff (Asax. 1) has a melodic line with a triplet of eighth notes in measure 26, marked with a '3' and a bracket. The second staff (Asax. 2) continues the rhythmic accompaniment. The third staff (El.) has a bass line with a triplet of eighth notes in measure 26, marked with a '3' and a bracket. A dynamic hairpin is present between the first and second staves.



Ab hier wieder  
zusammen,  
notfalls d# länger halten

Asax. 1

mf *growl* *f*

28 29 30

♩ = 110

Asax. 2

28 29 30

*growl* *f*

♩ = 110

El.

Asax. 1

31 32 33 34

Asax. 2

31 32 33 34

El.

Asax. 1

35 36 37 38

Asax. 2

35 36 37 38

El.

39 40 41 42 43 44 45

Asax. 1

Asax. 2

El.

$\text{♩} = 140$

46 47

Asax. 1

Asax. 2

El. GM-Piano

48 49

Asax. 1

Asax. 2

El.

50 51

Asax. 1

Asax. 2

El.

52 53

Asax. 1

Asax. 2

El.

div. GM-Sounds

140  
=110  
90

54 55

Asax. 1

*mf*

To

140  
=110  
90

54 55

Asax. 2

*mf*

El.

56 57

Asax. 1

Asax. 2

El.

Detailed description: This block contains the first system of a musical score. It features three staves: Asax. 1 (top), Asax. 2 (middle), and El. (bottom). Above the Asax. 1 staff is a large bracket with a dashed vertical line at the midpoint, indicating a measure division. The Asax. 1 staff has a treble clef and contains a melodic line with eighth and sixteenth notes, some with upward-pointing stems. The Asax. 2 staff also has a treble clef and contains a similar melodic line. The El. staff has a treble clef and contains a complex accompaniment with many beamed notes. The measures are numbered 56 and 57.

58 59

Asax. 1

Asax. 2

El.

Detailed description: This block contains the second system of a musical score, continuing from the first system. It features three staves: Asax. 1 (top), Asax. 2 (middle), and El. (bottom). Similar to the first system, there is a large bracket above the Asax. 1 staff with a dashed vertical line. The Asax. 1 staff has a treble clef and contains a melodic line with eighth and sixteenth notes. The Asax. 2 staff also has a treble clef and contains a similar melodic line. The El. staff has a treble clef and contains a complex accompaniment with many beamed notes. The measures are numbered 58 and 59.

60 61

Asax. 1

Asax. 2

Ei.

Detailed description: This system contains measures 60 and 61. Asax. 1 and Asax. 2 are in treble clef. Asax. 1 has a dynamic marking above the staff. Asax. 2 has a dynamic marking above the staff. Ei. is in treble clef and has a dynamic marking below the staff. The music features complex rhythmic patterns with many eighth and sixteenth notes, and rests.

62 63

Asax. 1

Asax. 2

Ei.

*mp*

*pp*

Detailed description: This system contains measures 62 and 63. Asax. 1 is in treble clef and has a dynamic marking below the staff. Asax. 2 is in treble clef and has a dynamic marking below the staff. Ei. is in treble clef and has a dynamic marking below the staff. In measure 63, Asax. 1 and Ei. have a triplet of eighth notes. The music continues with complex rhythmic patterns.

Asax. 1

64 65

Asax. 2

64 65

El.

Asax. 1

66 67 68

Asax. 2

66 67 68

El.

*mf*

Ab hier wieder zusammen

molto vib.

69 growl

Asax. 1

70 71 72

*f* *mp*

Asax. 2

69 70 71 72

*mp*

El.

Sprachfetzen

*mp* *mp*

73 74 75 76 77

Asax. 1

Asax. 2

El.

78 79 80 81

Asax. 1

Asax. 2

El.

*mf*

alle GM-Sounds hintereinander

82 83 84 85

Asax. 1

Asax. 2

El.

86 7                      87 8                      88 9                      89 10

Asax. 1

Asax. 2

El.

♩ = 200

90 11                      91 12                      92

Asax. 1

Asax. 2

El.

Glissando abwärts singen

*f*

GM-Sounds

93

94

Asax. 1

Asax. 2

El.



95

140  
=110  
90

Asax. 1

*pp*

95

140 To  
=110  
90

96

Asax. 2

div. GM-Sounds

*pp*

EI.

97

98

Asax. 1

97

98

Asax. 2

EI.

99

100

Asax. 1

*pp*

99

100

Asax. 2

EI.

101 102 growl 103

Asax. 1

*ff* *f*

Asax. 2

101 102 103

El.

gespielten Ton mitsingen, ggf. oktavier

104 105 106

Asax. 1

*p*

Asax. 2

104 105 106

*mf*

El.

107 108 109

Asax. 1

107 108 109

Asax. 2

El.

♩ = 140

Asax. 1

110 111 112

Asax. 2

110 111 112

El.

GM-Sounds

*ff*

Asax. 1

113 114

Asax. 2

113 114

El.

♩ = 140  
= 110  
90

Asax. 1

115 116

Asax. 2

115 116

El.

*pp* *f* *pp* *f* *pp* *f*

*f* *pp* *f* *pp* *f* *pp*

117 118

Asax. 1 *pp* *f* *pp f pp* *f pp* *pp*

Asax. 2 *f* *pp* *f* *pp f* *pp*

Ei.

119 120

Asax. 1 *mf*

Asax. 2 *f*

Ei.

1  
2  
3 Bb  
4  
5  
6

121 122 123

Asax. 1 *f* *mp*

Asax. 2 *pp* *f* *pp*

Ei.

extremes Vibrato

Alternativgriffe

1  
2  
3 Bb  
4  
5 Ta  
6 Eb

124 125

Asax. 1

124 125

Asax. 2

verschiedene Mehrklänge

El.

126 127 128

Asax. 1

126 127 128

Asax. 2

Karl Theodor sample

El.

♩ = 110

129 gesungen

*ff*

180 = 110

40

*p* möglichst tiefen Ton dazu gesungen

129 gesungen

*ff*

180 = 110

40

130

*p* möglichst tiefen Ton dazu gesungen

El.

*ff*

nur Klappengeräusch (stark betont, wenn möglich)

Asax. 1

131

132 Mundstück weg

Asax. 2

131 hoher Luftanteil

nur Klappengeräusch (stark betont, wenn möglich)

El.

Blechbläseransatz, sehr hoher, instabiler "dreckiger" Klang (evt. nach innen, kussähnlich)

Asax. 1

133

**"f"**

135

136

137

Asax. 2

133

134

sehr hoher Luftanteil

**pp**

reine Luft, auf angegebenem Griff

**"f"**

137

El.

autorap-sample, lautstärke an sax gekoppelt (gegenläufig)